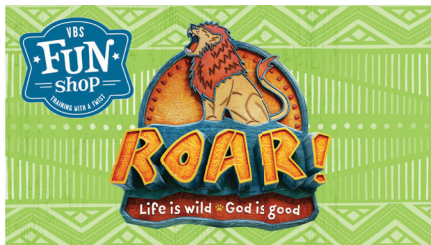


VBC FUNSHOP: ROAR!

Epworth is hosting a Group Publishing VBC Funshop on Saturday, **March 2**. Regional VBC leaders offering Roar VBC will gather here to network and receive hands-on training for the African Safari themed Bible Camp. They will learn how to create amazing decorations with step-by-step instructions, experience "A Day at VBC", learn how to plan, coordinate, and pull off an amazing VBC event! All the Epworth staff and members planning and participating in this great event is welcome to register by emailing vbs@epworth.com no later than this Tuesday, February 12.



2019 TOUCH A TRUCK PLANNING TEAM



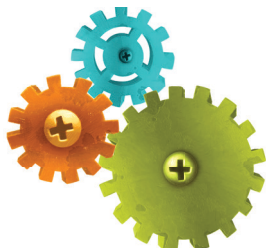
The snow may be flying, but Epworth's 9th Annual Touch-a-Truck Event is just around the corner and we need your help! An estimated 3,000 adults and children visit our campus each year for Touch a Truck, making this one of the biggest outreach events of the year. We are in need of individuals willing to give their time and talents by joining the planning team. This is a short 10-12 week commitment that starts in February and will end at our event on May 11. If you are interested in serving on the team for the 9th Annual Touch-A-Truck Event please contact Adam Schoesler at 419.351.0758 or adam.schoesler@bex.net.

SEEKING ARTISTS: STATIONS OF THE CROSS

On Good Friday, Epworth's sanctuary will once again host Stations of the Cross. It's an opportunity to reflect on Christ's sacrifice for us all and prepare for the Resurrection. Every year, artwork representing each station has been created by Epworth members and friends from the community.

You can be a part of this too! Pastor Beth is seeking creative individuals or groups to make a station inspired by scripture detailing Jesus' final moments. There are examples in Pastor Beth's office from previous years. Scriptures and more info are available by contacting Pastor Beth at beth@epworth.com.

GEAR UP '19 LEADERSHIP TEAM NEEDS YOU!



At the Ad-Council retreat, a new pillar was adopted for our church's vision- **'GROW - Actively invite and welcome all people into our community to grow in faith together.'** They also authorized the creation of a new sub-committee to equip our congregation in the work of active evangelism with the goal of expanding the numbers of invitations our members and friends extend to folks without a church family and improve the welcome we extend to our weekly guests. The new "GearUp 19" team is looking for team members! If you are interested in serving contact Doug at doug.gorsuch@gmail.com by next Sunday, February 17.

NEW CLASSROOM CROSSES

The children of Epworth have decorated one-of-a-kind wall crosses for each of the new classes in the children's wing.

The crosses were dedicated during worship on January 27 and will be hung in the rooms the beginning of February. Tour the children's wing and take a peek at these beautiful crosses.

WEEKLY REMINDERS



Scout SUNDAY

Cub Scouts, Boy Scouts, Girls Scouts and Adult Leaders are today's worship participants! Scouts will be serving in roles as Acolytes, Communion Servers, Greeters, Scripture Readers and Ushers. Join us in thanking and appreciating all our Scouts today!



NEW OPPORTUNITY TO SERVE

Do You Have The Spiritual Gifts Of...

Administration, Encouragement, Healing, Helps, Mercy, Or Shepherding?

If so, then please prayerfully consider how you might support this brand new ministry area! Get in at the beginning to help shape and mold this extremely important and much-needed ministry. Over four weeks, we will train you to provide prayerful and practical support!

No prior experience necessary!

WHAT WILL YOU DO?

Assist the pastoral staff with hospital and rehabilitation visits, help coordinate practical care in times of crisis, pray with families impacted by stressful events, and provide phone ministry prayer and cards of support. Four weeks of training is required, so please contact Pastor Beth to sign up and/or for more information at beth@epworth.com for more details.



POST GENERAL CONFERENCE SIMULCAST
SET FOR MARCH 2



Bishop Gregory V. Palmer will host a simulcast at the conference office on Saturday, **March 2** at 10am in response to the actions of the special session of General Conference which will be held in late February. There are 4 simulcast locations in the Maumee Watershed District: Epworth, Napoleon Christ, Maumee, and Sylvania First. All interested West Ohioans are welcome to participate.

The General Conference is the highest legislative body in The United Methodist Church. It is the only body that can speak officially for the denomination. The purpose of the Special Session of the General Conference is to act on a report from the Council of Bishops based on the recommendations of the Commission on a Way Forward. The 32-member Commission was appointed to examine paragraphs in The Book of Discipline concerning human sexuality and exploring options to strengthen the unity of the church. Contact Kay at kpanovec@wocumc.org with any questions.

PRESCHOOL REGISTRATION

Epworth Preschool has an Open House **today** from 1-3pm. Meet the teachers, and see the new space!

ECEC: Early Childhood Education Center is a half day preschool program for children 3-5 years old. Classes offered 2, 3 or 4 half days am or pm.

CDO: Children’s Day Out is a one day early preschool program for children who are 2 or 3. Children cannot turn 4 during the school year nor do they have to be potty trained.

Contact Jane at jlyon@epworth.com to schedule a visit. Go to epworth.com/preschool to learn more or to print a registration packet.

ANNOUNCING: CONNECTION POINT!



A **NEW** bible study/ small group geared towards post high school through mid-twenties.

The goal is to provide a faith based place to connect with peers and discuss issues relevant

to this stage of life. Led by Robin and Chuck Campos, this group is already meeting in room 205 at 9:45am on Sundays! Contact Chuck at chuck@epworth.com with questions.

ANTHEMS DURING THE HER STORY 2 SERIES

Our anthem this morning is *Joshua Fit the Battle of Jericho* by Patti Drennan. Patti earned a Bachelor of Music Education at Oklahoma State and a Masters of Music Education at the University of Oklahoma. She taught Choral Music for twenty-eight years, where she was voted Teacher of the Year. An active composer and arranger with over two million copies sold , Patti has almost 500 choral octavos, piano and piano/vocal books published with thirteen major publishers. She has been guest director at numerous "Composer Weekends". She has been an adjudicator for school choral contests in Oklahoma, Arkansas and Kansas. For almost ten years she served as Music and Worship Arts Director at First Baptist Church, Norman. Patti enjoys writing, leading music reading sessions for publishers and singing in a professional gospel choir. Her Christmas CD recorded with her daughter entitled "A Mother Daughter Christmas" is now available on I-Tunes, Amazon, GooglePlay and on www.emilydrennan.com/store.



TAM-O-SHANTER SKATING PARTY



A favorite family tradition returns next Sunday, **February 17** from 3-5:30pm – it’s the annual Family Skating Party at Tam-O-Shanter skating rink in Sylvania. For \$7 per individual or \$25 per family the afternoon includes private rink time, skate rental, and pizza. Sign up on the connection card, or RSVP to Karen at kgsa79@aol.com so we have a head count for pizza! Tam-O-Shanter is located at 7060 W Sylvania Ave. We look forward to seeing you and your friends there!

SUNDAY BIBLE STUDIES:

- **9:45am | Adult Bible Study | Rm 214**
Through Today: Dianne Smolen is facilitating discussions on Adam Hamilton’s book *Christianity’s Family Tree*, centered on the beliefs and practices of some of the different denominations of the Christian family tree. Join in!
- **9:45am | Coffee & Conversation | Rm 213**
Currently studying Adam Hamilton's book, *Simon Peter: He was not rich or educated, but was familiar with hard work, and left everything to follow his teacher, yet still struggled with doubt.*
- **9:45am | Connection Point | Rm 205**
Geared towards post high school through mid-twenties, the goal is to provide a faith based place to connect with peers and discuss issues relevant to this stage of life. Lead by Chuck & Robin Campos.
- **11 am | Sermon Notes | Rm 214**
Discussion around individuals understanding of the scriptures’ relevance to their journey.

WEEKDAY STUDIES:

- **9:15am | Tuesday Women’s Study | Rm 214**
It’s Not Supposed To Be This Way by author Lysa Terkeurst: Offers a safe place to share your disappointments and gives fresh biblical insight along with life-giving perspectives to get you through painful situations. Facilitated by Kris Martin and Dolli Darah.

SERVICES OF HEALING AND WHOLENESS

Open to all, let the Holy Spirit begin your healing journey. Join us on **February 19**, the service begins at 7pm in the Sanctuary.

DEBORAH CIRCLE

Let’s celebrate the month of love by making a glass heart paperweight. The artist who will teach us is our own Garrett Wheeler! We will meet at Toledo Botanical Gardens on Saturday morning, **February 16** promptly at 9:30am. The cost is \$35 per person. Additional details will be emailed to you when you RSVP to Janet at jan-et@further.com. Invite a friend and come explore your creativity!

ADULT SINGLES

Single, divorced and widowed adults in the Toledo community are invited to join. RSVP to Nancy Hauer at hauer.nancy@yahoo.com or call 419.885.4595. The next opportunity to join us is:

TODAY: Sunday Brunch at 11:30am - Lourdes University, All you can eat brunch for \$8.50.

FRIENDS IN FAITH:
BUNCO

All women are welcome, bunco is a simple game, but it is more about the Christian fellowship. Bring a side dish, appetizer or dessert to share. We start at 6:30pm with dinner before we play.

FEBRUARY 12: Martha's house, (1560 Saddlebrook Ct., Toledo.) RSVP to marthakreuz@aol.com.